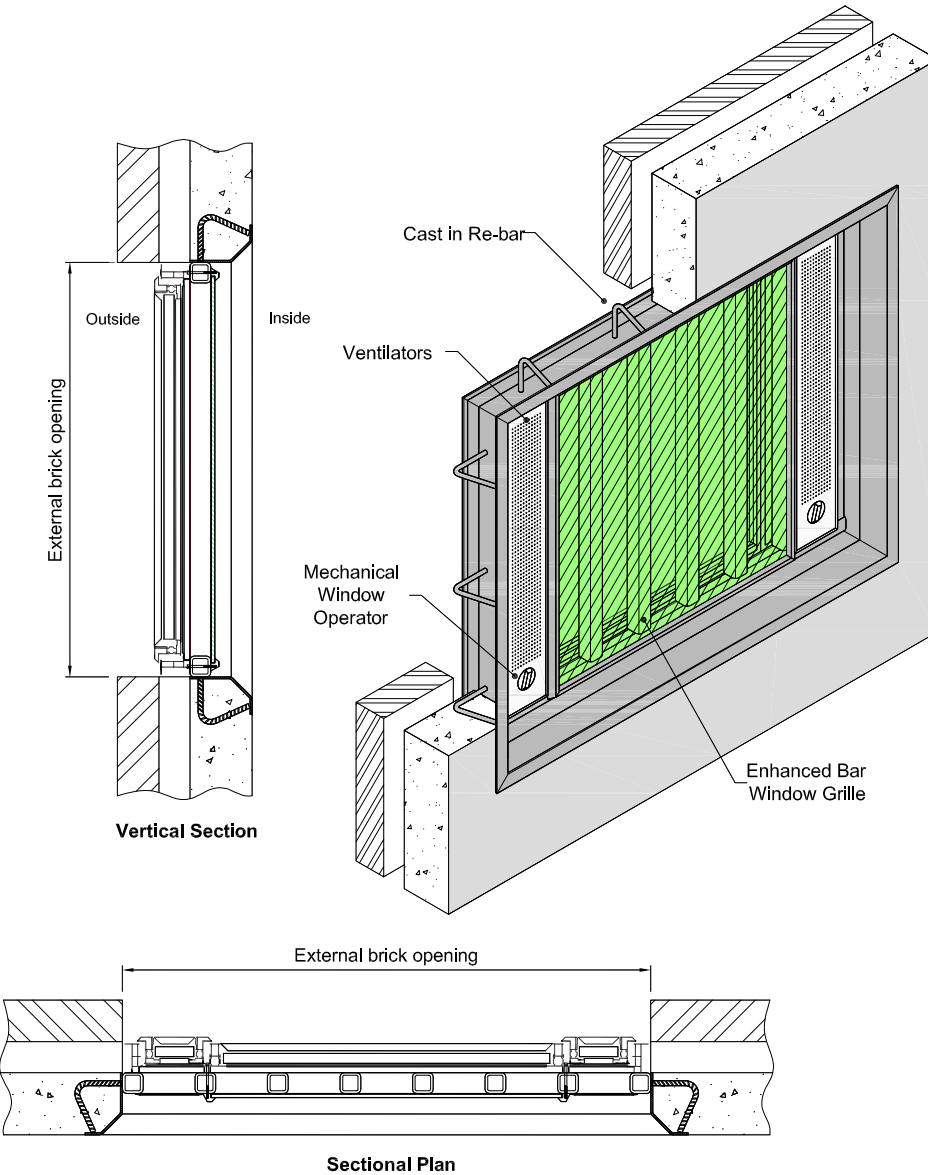


CSL0608



vertical bars (English)



horizontal bars (Scottish)

Specification

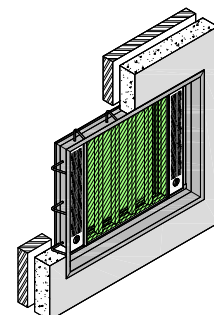
- Compliance with NOMS 2005 safer cell window development.
- Independently tested by Bureau Veritas to NOMS STD/X/SPEC/024.
- 24 hour cut resistance bars.
- Window assembly meets building regulations part L.
- The grille is constructed from 50mm x 50mm x 6.4mm square hollow section grade 50 D high tensile steel, enhanced with tungsten carbide rods on all corners with all joints hard faced welded.
- Polycarbonate 8mm screen mounted to the internal face.
- External window frame is thermally broken and is constructed from aluminium which can be opened to allow the free flow of air.
- 2mm thick 304 stainless steel ventilation plates with 3mm holes are fitted to the inside allowing for 36% air flow.
- Anti-ligature window control mechanisms (mk8) is housed within the ventilation panel allowing easy operation of the opening sashes.

Finish

- The external aluminium window is supplied pre-painted to a gloss white finish.
- Enhanced bar grilles prime painted for finishing painting on site.
- Brushed DP1 finish stainless steel ventilation plates.

Options

- Single ventilation plate.
- Double width ventilation on one side.
- Can be bolt fixed instead of casting.
- Barred grille can be supplied pre-finished white.



CSL0608