

CSL1480

Cell Lock Mounting Plate

Purpose

A steel mounting plate specifically designed to be welded into a steel door or gate.

Specification

- 6mm thick laser cut steel plate.
- 5 off M10 x 1.0 threaded holes for CSL1471 mounting studs.

Finish

- Left natural for welding.

Compatible with

- CSL1401B, CSL1402, CSL1403, CSL1404 and CSL1405



CSL1481

Lock Boxes

Purpose

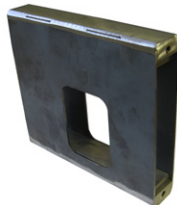
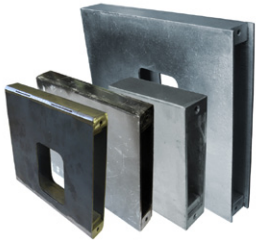
A range of outer steel lock boxes specifically designed to be welded into a steel door or gate which matches the range of mortice locks.

Specification

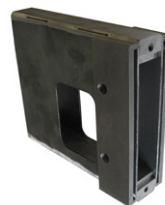
- All steel welded construction.

Finish

- Left natural for welding.

**CSL1481A**

CSL1420 / CSL1421 / CSL1422
(3G112 mk2 / 3G112 mk3 / 3G317)

**CSL1481B**

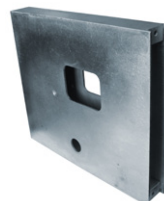
CSL1423 / CSL1424
(3M56 mk2 / 3M56 mk3)

**CSL1481C**

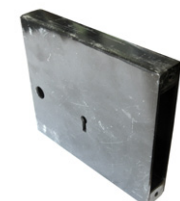
CSL1425 / CSL1426
(3G222 mk2 / 3G222 mk3)

**CSL1481D**

CSL1406
(3R47)

**CSL1481E**

CSL1428
(3R63)

**CSL1481F**

CSL1433 / CSL1434
(3J60 / 3J60X)

**CSL1481G**

CSL1430
(3G110)

**CSL1481H**

CSL1431
(3G114)