

Heavy Duty Circular Door Stop (Ligature Resisting)

CSL1526

Specification

- Solid rubber conical door stop mounted in a ligature resisting solid aluminium housing.
- 120mm diameter x 80mm.
- Supplied and fixed with M10 expansion bolt.
- Suitable for fixing at low or high level.

Finish

- Aluminium holder anodised silver.
- Rubber black stop.



Large Cylindrical Door Stop

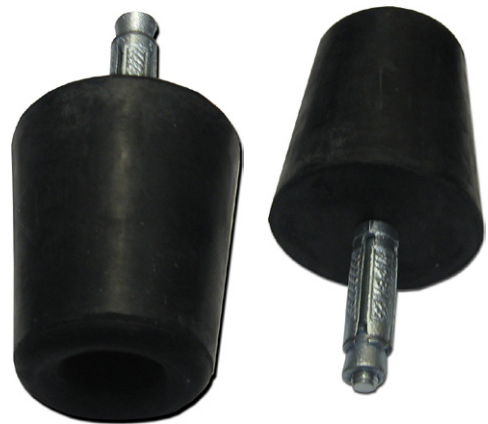
CSL1527

Specification

- Solid rubber conical door stop.
- 65mm diameter x 75mm.
- Supplied and fixed with M8 expansion bolt.
- Suitable for fixing to a wall or floor.

Finish

- Rubber stop black.



Large Rectangular Door Stop with Curved Face

CSL1528

Specification

- Solid rubber block.
- 124mm long x 44mm wide x 46mm high.
- Supplied with two 10x100/50 frame fixings.
- Suitable for fixing to a wall or floor.

Finish

- Rubber black stop.



Large Rectangular Door Stop

CSL1529

Specifications

- Solid rubber block.
- 150mm long x 50mm wide x 50mm high.
- Supplied with 2 x M10 expansion bolt fixings.
- Suitable for fixing to a wall or floor.

Finish

- Rubber black stop.

