

CCTV Corner Housing

CSL1317

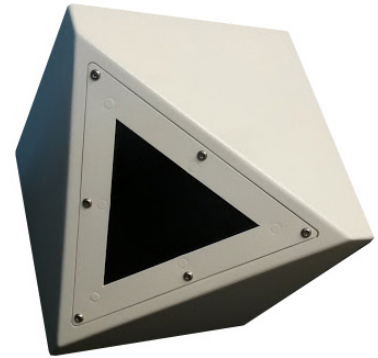
CCTV Corner housing is ideal for mounting within a custody cell or in high risk areas. Designed with easy access in mind once anti-pick mastic has been applied.

Specification

- Ligature resisting corner housing.
- Angled design for maximum room coverage.
- 4mm high impact polycarbonate with anti-scratch coating.
- Housing secured via anti-tamper fixings.

Finish

- Polyester powder coated textured white.



Cell Wall Clock

CSL1318

Specification CSL1318A - Wall Clock (Blue)

- Robust ligature-resisting steel case designed for wall mounting.
- Polycarbonate anti-vandal screen secured by tamper resistant screws.
- Large blue LED digits (75mm time/30mm date & temp).
- Displays hours, minutes, date, month & temperature.
- Year between 2000 and 2049 not displayed.
- Hour/minute 24 hour format.
- Temperature displayed in degrees C.
- When the mains power is off, the LED display shuts down, but the CPU can operate automatically (battery inside), thus it is unnecessary to reset when the power is back on
- Mains Power input AC100 – 240V 50/60HZ 0.35A max.
- Power output 6V DC 1.5A.
- Silent operation.
- Size 830 x 455 x 80mm (WxHxD)

Finish

- White textured polyester powder coated steel casing.

Options

- Alternative polyester powder coating colours available.

Specification CSL1318B - Wall Clock (Red)

- Robust ligature-resisting steel case designed for wall mounting.
- Polycarbonate anti-vandal screen secured by tamper resistant screws.
- Large 50mm LED digits.
- Displays hours & minutes.
- Hour/minute 12 or 24 hour format.
- When the mains power is off, the LED display shuts down, but the CPU can operate automatically (battery inside), thus it is unnecessary to reset when the power is back on.
- Mains Power supply 230V – 10% 50/60HZ.
- Operating temperature -5 to +50 degrees C.
- Silent operation.
- Size 630 x 455 x 115mm (WxHxD)

Finish

- White textured polyester powder coated steel casing.

Options

- Alternative polyester powder coating colours available.
- Red, Yellow, green or blue LED digits available.



CSL1318A - Wall Clock (Blue)



CSL1318B - Wall Clock (Red)