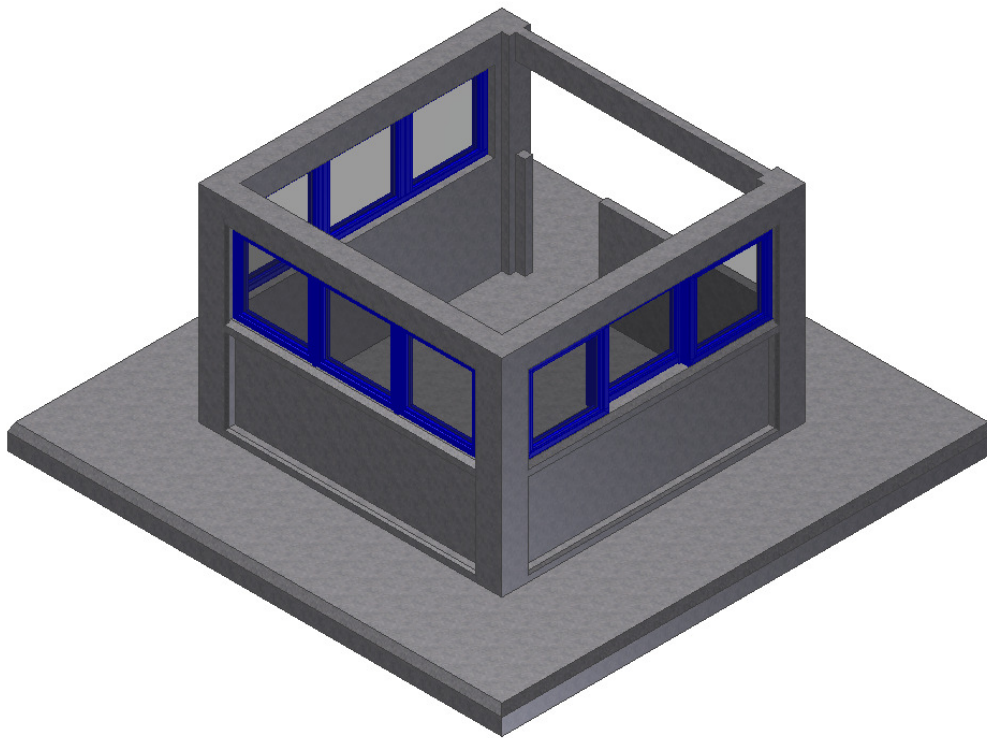


CSL0619

**Specification**

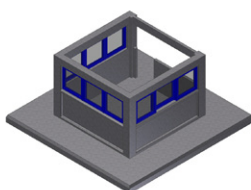
- Steel or aluminium profile framing system.
- Ballistic rated laminated glass ranging from BR1 to BR7.
- Conforming to BS EN 1063.
- Expansion bolt fixings to suit a variety of structural openings.

Finish

- Polyester powder coated various colours available.

Options

- Framing system can be ballistic rated certified to BS EN 1522 & 1523
- Document trays and transfer units can be provided..
- Intercoms can be provided.
- A lockable sliding window can be incorporated.



CSL0101