

## CSL1508

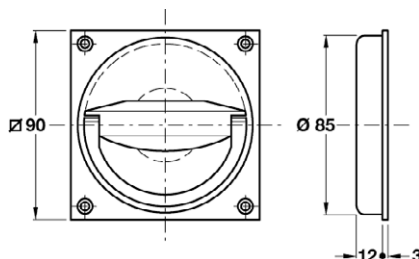
## Flush Latch Handle

**Specification**

- Square 90mm flush ring pull handle.
- Suitable for operating a mortice latch with an 8mm spindle.

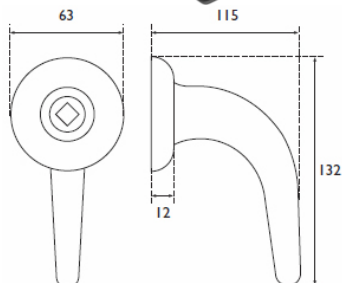
**Finish**

- Stainless steel.



## CSL1509

## Ligature Resisting Lever Handle

**Specification**

- Large aluminium ligature resisting unsprung lever handle set.
- The lever handles are designed to point downwards to help prevent ligature attachment.
- Concealed fixings.

**Finish**

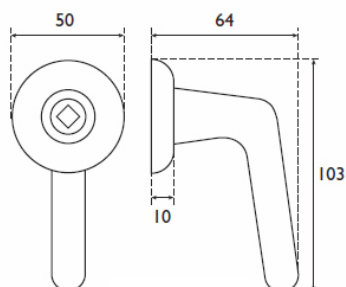
- Satin aluminium.

**Options**

- Stainless steel.
- Available mounted on a back plate with keyhole.

## CSL1510

## Ligature Resisting Lever Handle

**Specification**

- Small aluminium ligature resisting unsprung lever handle set.
- The lever handles are designed to point downwards to help prevent ligature attachment.
- Concealed fixings.
- 50mm Rose with 38mm bolt through fixing centres.

**Finish**

- Satin aluminium.

**Options**

- Stainless steel.
- Available mounted on a back plate with keyhole.