

Door Contact Magnetic Read Switch

CSL1533

Specification

- Voltage: 30 VAC/VDC max.
- Current: 0.25 A max.
- Power: 3.0 W max.
- Loop type: Open or Closed.
- Electrical configuration: DPDT.
- Lead type: 1 ft. #22 wire.
- Gap distance: Up to 1/2 inch.
- Dimensions: 1.125 in. L x 1.125 in. dia. (29 x 29 mm).

Finish

- Housing: Flame retardant ABS plastic.



Concealed Door Loop

CSL1534

Specification

- Lead cover to enable the unbroken transfer of wire bundles up to 6mm in diameter between door and frame. Suitable for doors opening up to 120°.
- Not for use on centrally pivoted doors.

Finish

- Chrome.



Door Information Card Holder

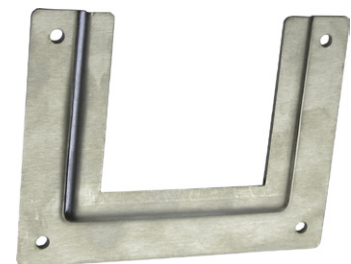
CSL1535

Specification

- Ideal for identification cards.
- Suits cards sized 85mm wide x 75mm high up to 2mm thickness.
- Can be secured by rivets or security fixings.

Finish

- One piece stainless steel satin finish.



Door Seal Head and Jambs

CSL1536

Specification

- Designed to be fitted to existing door stops.
- Tested in accordance with BS EN ISO 140-3: 1995.
- Meets smoke leakage performance requirements of BS 5588.
- Certified CF136.
- Weighted Sound Reduction Index (Rw): 31dB.

Finish

- Anodised aluminium with black silicone rubber gasket.

