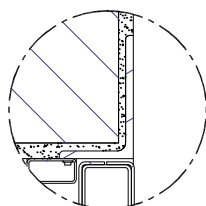


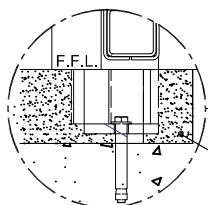
CSL0101



Section at Head

Full View 3 Position Service Hatch

Type 1 Slam Lock



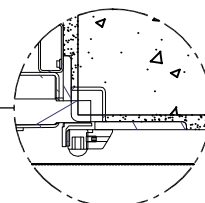
Threshold Detail

Chase in floor by others

Secure Corridor Side
(Door Opens Outwards)

Adjustable Lock Keep (fail-safe)

Vertical Louvred Vision Panel



Frame Detail

2100mm Structural Opening Height

910mm Structural Opening Width



TESTED VIEWER



TESTED HATCH

Specification

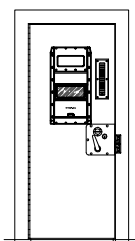
- Door panel constructed from 40mm wide rolled hollow steel sections with 3mm thick steel door skins.
- Cell side of door clad with an additional 0.8mm thick bright annealed rigidised stainless steel skin. (Pattern ref: 12 LG)
- Internally reinforced with 3mm thick plates up to the underside of lock.
- Mineral wool insulation to all internal voids.
- 125mm x 75mm x 8mm rolled steel angle frame.
- 50mm x 25mm stainless steel rebates.
- Frame fixed into the structural opening with concealed 12mm dia sleeve anchors.
- Door panel mounted within the door frame and hung on a substantial continuous hinge.
- Home Office Type 1 slam action lock with adjustable keep.
- Gasket free vertical louvred vision panel.
- Full View 3 position service hatch.
- Tolerance between door panel and rebate conforms to current Home Office specification not to exceed 2mm.

Finish

- One coat factory applied high build zinc phosphate primer to all mild steel surfaces.
- Rigidised stainless steel bright annealed to cell side of door panel. (Pattern ref: 12LG)

Options

- Gasket free circular spy hole with swivel cover.
- Frame fixings to suit a variety of opening constructions.
- Monitored hatch for Life Signs Monitoring.



CSL0101